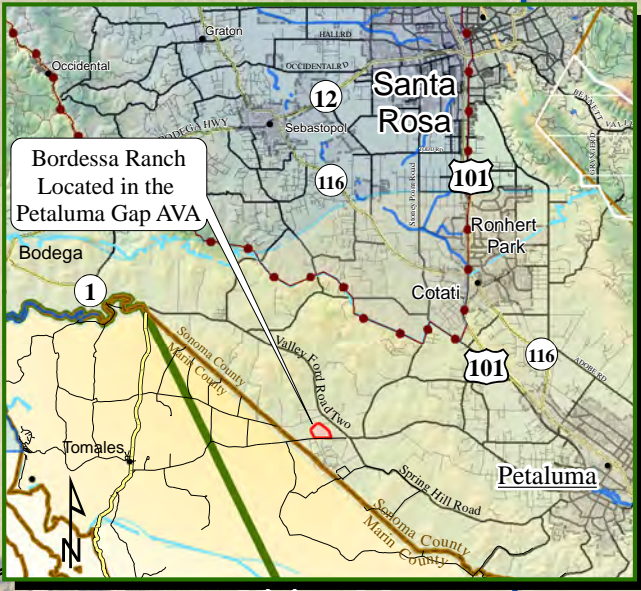
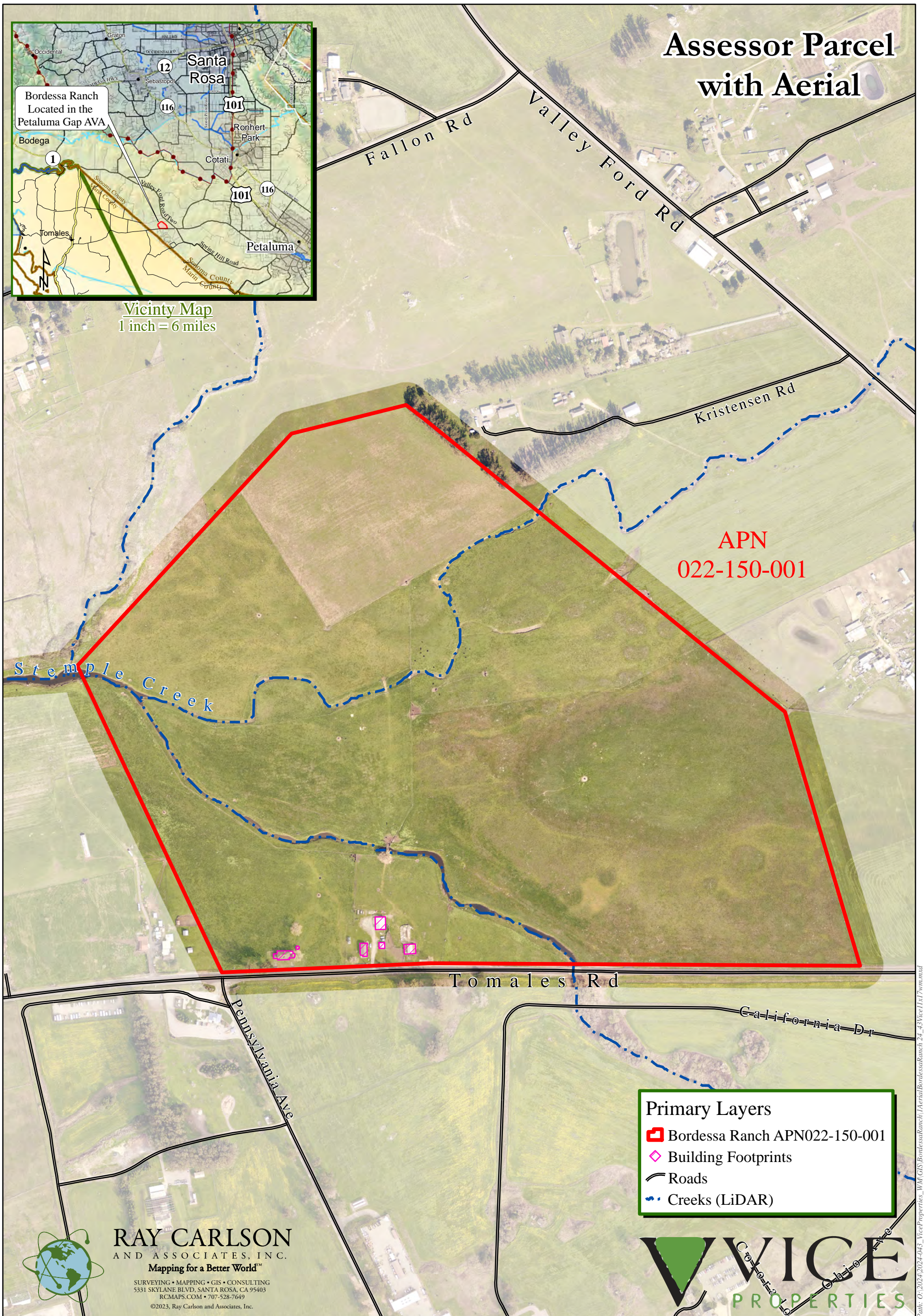


Assessor Parcel with Aerial



Vicinity Map
1 inch = 6 miles



APN
022-150-001

Primary Layers

- Bordessa Ranch APN022-150-001
- ◆ Building Footprints
- Roads
- Creeks (LiDAR)



RAY CARLSON
AND ASSOCIATES, INC.
Mapping for a Better World™

SURVEYING • MAPPING • GIS • CONSULTING
5331 SKYLANE BLVD, SANTA ROSA, CA 95403
RCMAPS.COM • 707-528-7649
©2023, Ray Carlson and Associates, Inc.



NOTE: THIS MAP WAS CREATED BY RAY CARLSON & ASSOCIATES, INC. ASSESSOR PARCEL AND STREET DATA PROVIDED BY COUNTY OF SONOMA, SUBJECT TO STANDARD CONDITIONS.

BOUNDARY SHOWN FOR REFERENCE PURPOSES ONLY. NO LIABILITY IS ASSUMED OR IMPLIED FOR THE LOCATION OF BOUNDARY LINES OR THE ACCURACY OF ACREAGE FIGURES HEREON. USE OF THIS PRODUCT IS COVERED BY COPYRIGHT LAWS.

RAY CARLSON & ASSOCIATES, INC. IS TO BE HELD HARMLESS FOR ANY AND ALL DISCREPANCIES OF DISTANCE AND GRAPHIC DISTORTION RELATING TO THE USE AND DEPENDENCE UPON THIS REPRESENTATION.

Aerial per Sonoma County Ortho Pictometry 2021, Flown 2021.

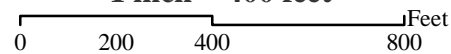
Elevations, Building Outlines and Creeks per Sonoma County Vegetation Mapping and LiDAR Consortium, NASA, University of Maryland, Watershed Sciences, Inc., Tukman Geospatial LLC. Lidar was flown in 2013. Appellation boundaries by Ray Carlson & Associates, Inc. based on Alcohol and Tobacco Tax and Trade Bureau USGS map notes and bounds descriptions.

Bordessa Ranch 126± Acres

530 Tomales Road
Petaluma, CA



1 inch = 400 feet



Darryl J. Vice
707.889.4569
dvice@viceproperties.com

Scott T. Murphy
707.477.5201
scottmurphy707@gmail.com

Path: C:\2024\2024-043_ViceProperties_WM\GIS\BordessaRanch\Aerial\BordessaRanch_24_43Vice1x17w.mxd